



2022

COMMUNITY PROFILE

*"Proudly remembering our past;
Confidently embracing our future."*



LAND

ACKNOWLEDGEMENT

"The land on which we meet has been here from time immemorial. People have inhabited southern Ontario for about 10,000 years and we acknowledge the Attawandaron, Anishinabeg, and Haudenosaunee peoples who lived here when settlers arrived and who share this land with us. May we together learn to care for and respect each other, our flora and fauna, and the land we inhabit together."

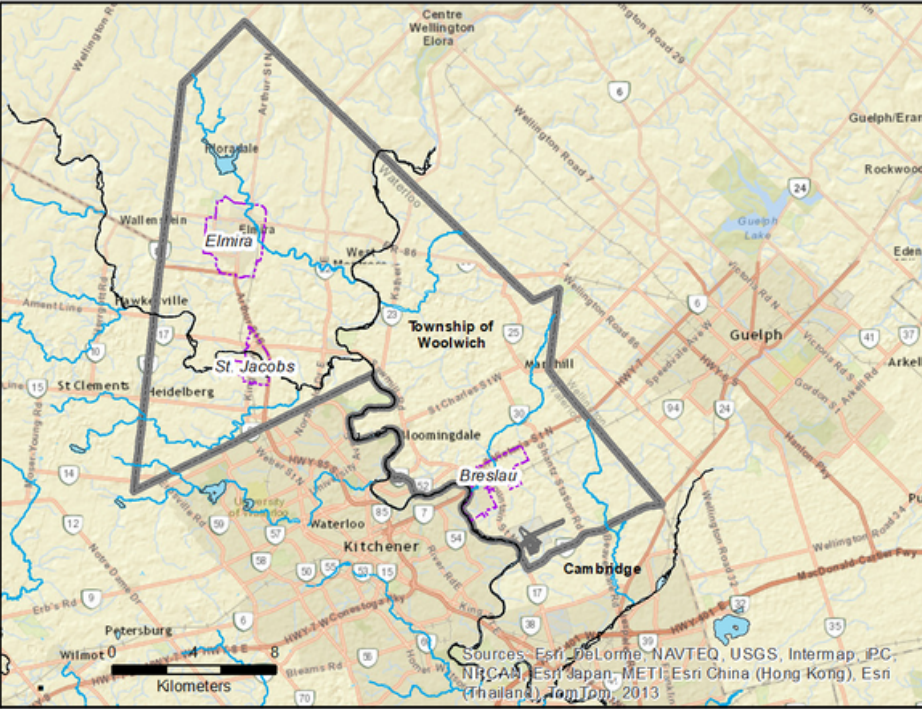


Located in the heart of South Western Ontario, the Township of Woolwich surrounds the Cities of Waterloo, Kitchener and Cambridge, and is within minutes of the City of Guelph.

Woolwich is not only known for its farms and farm markets, but also its industry, trails and providing a rural lifestyle with all the conveniences of the city.

The Township contains an area of approximately 31,912 hectares (78,854 acres), with a population of approximately 25,000 people.

Woolwich is comprised of an extensive rural area along with residential communities and industrial/commercial areas which include Elmira, St. Jacobs, and Breslau.



OUR VISION

A vision reflects the aspirations of the organization and its activities providing a panoramic view of “where we are going”. It points an organization in a particular direction and charts a strategic path for everyone to follow.

“Woolwich will be known as a Community of Choice in the Province of Ontario because of its:

- Sustainable Growth Practices;
- Forward-Looking Investment in Infrastructure Maintenance & Transportation Planning;
- Effective Communication Strategies;
- Responsible Fiscal Planning;
- Safe, Active, and Environmentally Friendly Communities; and
- Solid Governance, Progressive Administration, and Community Engagement Practices”

OUR MISSION

While a vision paints a picture of a final destination, the destination presupposes a starting point. Every strategic vision begins with a clearly crafted mission statement articulating “who we are”, “what we do” and “where we are now”. The following mission statement is the stepping off point for the long-term vision - where we want to go.

“We believe Woolwich Township citizens deserve responsible community leadership, high quality services and programs, sound financial management and customer service assistance in a courteous, helpful manner. Elected officials, staff and volunteers aim to exceed resident expectations.”



A MESSAGE FROM OUR MAYOR

"It is difficult to capture the extensive and beautiful sense of community that exists here in Woolwich. We are a growing municipality that desires to maintain our roots that connect to one another through our schools, recreation programs, rivers, walking and cycling trails friendships and more! Our commercial, industrial and agricultural sectors range from traditional family farms and small business entrepreneurs, to international corporations and high tech industry.

We are partners in the wider community of Waterloo Region which encompasses the cities of Kitchener, Cambridge and Waterloo and three other townships including Wellesley, Wilmot and North Dumfries.

Woolwich is a growing, active, engaged and vibrant community of communities with a dozen towns and settlements, each with its unique identity and history. Our people have a strong sense of pride in where we have been and where we are headed. We hope you will join us!"

- Mayor Sandy Shantz

Members of Council

Ward 1 Councillors

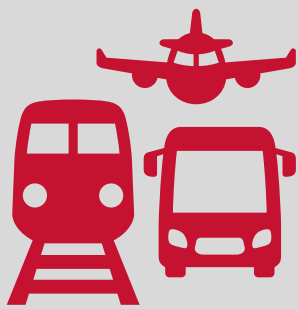
Evan Burgess & Nathan Cadeau

Ward 2 Councillor

Eric Schwindt

Ward 3 Councillors

Bonnie Bryant & Kayla Grant



TRANSPORTATION

Highway, Airport, Public Transit, Rail

Being in the heart of southern Ontario, Woolwich is central to many urban and rural markets and provides ample transportation choices.

HIGHWAY

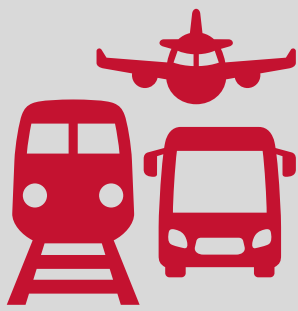
Access the Conestoga Parkway and Highway 401 corridor within minutes; as well access can easily be gained to the most major thoroughfares in the Province, providing access to the GTA and US borders.

- [Highway 7](#): Southern Portion of Woolwich (Breslau Area)
- [Highway 86](#): Entering Woolwich from the City of Waterloo
- [Highway 8](#): Approximately 20 km (12 miles) to Elmira and 12km (7.5 miles) to the Woolwich boundary
- [Highway 401](#): Approximately 28 km (17 miles) to Elmira and 20km (12 miles) to the Woolwich boundary

DISTANCE TO

Major Urban Centres	KM	Miles
Cambridge	28	18
Hamilton	50	31
Kingston	350	217
Kitchener/Waterloo	15-20	9-12
London	100	62
Montreal	635	394
North Bay	410	254
Ottawa	490	304
St. Catherines	100	62
Thunder Bay	1440	894
Toronto	100	62
Windsor	285	177

Border Crossings	KM	Miles
Lewiston/Queenston	110	68
Niagara Falls/ Niagara Falls	130	80
Buffalo/Fort Erie	155	96
Port Huron/Sarnia	190	118
Alexandria Bay/Ivy Lea	400	248
Ogdensburg/Prescott	450	279
Massena/Cornwall	520	323
Sault St. Marie/Sault St. Marie	750	466



TRANSPORTATION

AIRPORT

Air travel cannot get much better. Just over an hour from Pearson International Airport in Toronto, Woolwich is home to the Region of Waterloo International Airport.

Nearest Airports

- [Region of Waterloo International Airport](#) (YKF) (Breslau Area) - 519-648-2256
- [Hamilton International Airport](#) – John C. Munro (YHM) – 50 km (31 miles) - 905-679-1999 Ext. 226
- [Toronto Pearson International Airport](#) (YYZ) – 80 km (50 miles) – (416) 247-7678

PUBLIC TRANSIT

Elmira and St. Jacobs are served by public transit by Grand River Transit and Kiwanis Transit, connecting to Waterloo, Kitchener and Cambridge.

RAIL

There are two rail lines in the area, one running to Elmira and St. Jacobs and a main line from Kitchener to Guelph and Toronto. This main line offers GO Transit rail service.

Region of Waterloo

- Waterloo to Elmira
- Freight/ Tourist Train
- [Waterloo Central Railway](#)

Metrolinx GO Transit/VIA Rail

- Kitchener/Waterloo to Toronto
- Passenger Train
- [Metrolinx](#)
- [VIA Rail](#)



DEMOGRAPHICS

General Population



As of 2021 ([Census](#)) the population of Woolwich is approximately **26,999**



As of 2021 ([Census](#)) the total number of households in Woolwich is approximately **9,556**



As of 2021 ([Census](#)) the total population of the Region of Waterloo is **587,165**. The Region's population has increased by **9.7%**, whereas Woolwich grew by **8%**.

LARGEST SETTLEMENT WITHIN WOOLWICH TOWNSHIP, 2021 ([CENSUS](#))

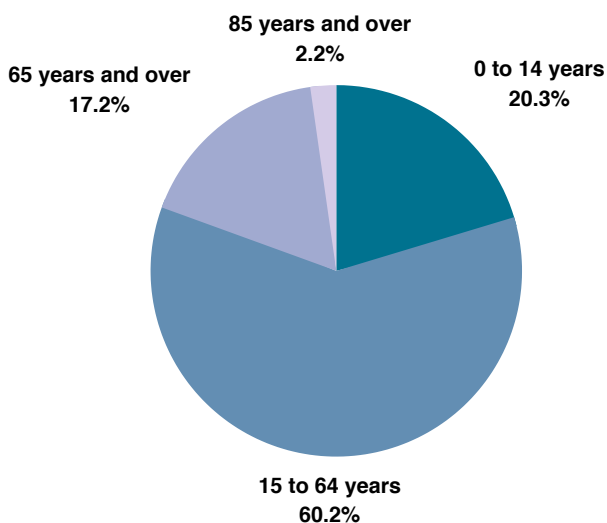
SETTLEMENT	# OF PEOPLE	# OF DWELLINGS
Elmira	10,790	4,173
St. Jacobs	1,959	740
Breslau	5,053	1,635

Families and Households



Woolwich is a younger community, where the average family size is **3.1 people**, generally made up of couples, and the average age is **39.7 years old**.

POPULATION BY AGE





INDUSTRY & LABOUR

Woolwich Labour Force

Woolwich is known for having a dedicated hard-working community with a strong work ethic. With a well-balanced mix, Woolwich has over 50% of its workforce with a post-secondary certificate, diploma or degree. This translates into a strong and well-rounded workforce with comparable wage rates in both the public and private sectors.

Labour Force By Industry - Woolwich (2016 [Census](#))

Industry	Total Workforce	Male	Female
Agriculture; forestry; fishing and hunting	1210	700	505
Mining; quarrying and oil and gas extraction	15	10	0
Utilities	45	40	10
Construction	1075	965	110
Manufacturing	1955	1440	510
Wholesale trade	580	410	170
Retail trade	1360	625	730
Transportation and warehousing	500	405	95
Information and cultural industries	305	135	165
Finance and insurance	305	260	495
Real estate and rental and leasing	210	110	105
Professional; scientific and technical services	960	505	455
Management of companies and enterprises	25	15	20
Administrative and support; waste management and remediation services	470	255	215
Educational Services	1025	255	770
Health care and social assistance	1320	175	1145
Arts; entertainment and recreation	215	100	115
Accommodation and food services	550	215	335
Other services (except public administration)	755	380	380
Public Administration	535	310	225
Total	13860	7310	6555



SERVICE FEES & RATES

Site Plan Application Process (2023)

- Preapplication consultation – \$1,500.00
- Review to deem complete - \$500.00
- Development Agreement application - \$5,000.00
- For additional Development application fees please [CLICK HERE](#) to visit the Township website

Building Permit (2023)

- Industrial (Group F) – shell \$0.70 per sq ft
- Industrial (Group F) – finished \$0.93 per sq ft
- Commercial (Group E) – shell \$1.22 per sq ft
- Commercial (Group E) – finished \$1.76 sq ft
- Plumbing Permit fee – \$8.00 per fixture
- Septic Permit fee – \$516.00
- Curb Stop Deposit – \$750.00
- Water Meter fee – Water meter fees vary for industrial / commercial development depending on the nature of the business and the size of the water service and required meter. For additional information regarding these fees please contact Township Building staff at [ext. 6042](#)
- Entrance Permit fee – \$120.00
- Entrance Permit Damage Deposits – \$130.00 / m
- For a full list of Building Permit fees please [CLICK HERE](#) to visit the Township website.

Development Charges

Woolwich Township

[CLICK HERE](#) to visit the Township website. For more information, please contact Township Finance department at [519-669-1647 / 1-877-969-0094 ext. 6013](#)

Region of Waterloo

[CLICK HERE](#) to visit the Region's website. For more information, please contact Regional Finance department at [519-575-4421](#) or email at rdc@region.waterloo.ca

Education Development Charges

[Waterloo Region District School Board](#)

[Waterloo Region Catholic District School Board](#)



ECONOMIC INDICATORS

Comparison of Municipal Tax Rates -2022

Municipality	Industrial	Commercial
Woolwich	0.02384398	0.02384398
Cambridge	0.0335516	0.0335516
Kitchener	0.02806838	0.02806838
Waterloo	2.788630	2.788630
North Dumfries	0.02397253	0.02397253
Wellesley	0.02494369	0.02494369
Wilmot	1.029132	1.029132
Guelph	3.152516	2.776512

Please note the above rates include education and other levels of government (i.e. Region or County) as they are a two-tier system.



COMMUNITY SERVICES

Whether you live or work in the Township, Woolwich has several opportunities to help you and your business to conduct work outside the office, or to enjoy when you are not at work. With many kilometers of trails, fresh farm produce, theatre, golf, hotels, and more there is choice in Woolwich.



Schools (Elementary and High Schools)

8 Public Elementary schools operated by the Waterloo Region District School Board:

- Breslau Public School – Breslau
- Conestogo Public School – Conestogo
- Floradale Public School – Floradale
- John Manhood Junior Public School – Elmira
- Park Manor Senior Public School – Elmira
- Riverside Public School – Elmira
- St. Jacobs Public School – St. Jacobs

2 Catholic Elementary Schools operated by the Waterloo Catholic District School Board:

- St. Teresa of Avila – Elmira
- St. Boniface – Breslau

1 Public Secondary School operated by the Waterloo Region District School Board:

- Elmira District Secondary School – Elmira

As well as several Private Schools including:

- Foundation Christian School (JK to Grade 8)
 - Koinonia Christian Fellowship (JK to Grade 8)
 - St. John's Kilmarnock (JK to Grade 12)
 - Woodland Christian High School
-

Universities

The University of Waterloo and the Wilfred Laurier University are within minutes from Woolwich, however, a host of others are within 1 hour drive such as The University of Guelph, McMaster University, The University of Toronto, York University, and The University of Western Ontario.



Colleges

Also within a 1 hour drive of the Township are a number of Colleges including: Conestoga (with campuses in Waterloo, Kitchener, Cambridge, Guelph, Stratford, Brantford and Ingersoll), Mohawk, Centennial, George Brown, Humber, Seneca, Sheridan, and Fanshawe.



COMMUNITY SERVICES



Emergency Services

- [Police Station](#) – (Waterloo Regional Police)
 - [Fire Station \(Volunteer\)](#) – 6 (Elmira, Floradale, Conestogo, St. Jacobs, Maryhill and Breslau)
 - [Ambulance Stations](#) – 2 (St. Jacobs and Breslau)
-



Hospitals

Area hospitals include Grand River Health Care Centre which includes Kitchener Waterloo Health Care Centre and Freeport Health Centre, St. Mary's General Hospital, and Cambridge Memorial Hospital.



Motor Vehicle License Bureau (MTO)

13-B Industrial Dr, Elmira, ON N3B 2S1



Financial Institutions

- Royal Bank (Elmira) – Commercial Bank
 - Bank of Montreal (Elmira)– Commercial Bank
 - TD Canada Trust (Elmira)– Commercial Bank
 - Mennonite Savings and Credit Union (Elmira) – Credit Union
 - Scotia Bank (St. Jacobs)– Commercial Bank
-



Communication Infrastructure Available

- Digital Switching
 - Local Internet Provider
 - Fibre Optics
 - Internet ADSL
 - Scaleable Transmission Speed
-



Community Centres

- [Woolwich Memorial Centre](#), Elmira
- [Woolwich Community Health Centre](#), St. Jacobs
- [Breslau Community Centre](#)
- [Bloomingdale Community Centre](#)
- [Maryhill Heritage Park Community Centre](#)



COMMUNITY SERVICES



Live Theatre

- [Elmira Theatre Company](#).
 - Drayton Entertainment operating [St. Jacobs Country Playhouse](#) and [St. Jacobs Schoolhouse](#)
-



Recreation Facilities

- Arena – 2 (Elmira and St. Jacobs)
- Pool – 1 (Elmira)
- Skate Park (Elmira)
- Splash Pad (Elmira)
- Ball Diamonds/Sports Fields – (21)
- Tennis Courts (Public) – 5
- Dog Park (Elmira)

For a full list of facilities in Woolwich, [CLICK HERE](#)



Golf Courses (Public)

- [Merry-Hill Golf Club](#), Breslau
 - [Elmira Golf Club](#)
 - [Conestoga Golf Club](#)
 - [Beaverdale Golf Club](#), Cambridge
-



Places to Stay

- 5 Hotels
- 2 Country Inns
- 8 Bed & Breakfasts
- 1 Camp Ground

For a full list of accommodations in Woolwich, [CLICK HERE](#)



Shopping

- [Downtown Elmira](#)
- [St. Jacobs Village](#)
- [St. Jacobs Market District](#)
- [Downtown Kitchener](#)
- [Uptown Waterloo](#)
- [Conestoga Mall](#) and [Fairview Mall Shopping Centres](#)



CONTACTS



Region of Waterloo

[Planning and Development Services](#)



GREATER KITCHENER WATERLOO
CHAMBER OF COMMERCE
BUSINESS BUILDING COMMUNITY

[Contact Us](#)



[Planning and Development](#)



WATERLOO REGION
SMALL BUSINESS CENTRE

[Contact Us](#)



[Website](#)

(226) 896-2200



WATERLOOEDC
inventing the future

[Contact Us](#)



[Headquarters](#)

Non- Emergency: (519) 570-9777

Emergency: 911



MUNICIPAL
PROPERTY
ASSESSMENT
CORPORATION

[Website](#)

1 (866) 296-6722



THE
ACCELERATOR
CENTRE

[Website](#)

(519) 342-2400



[Website](#)

(519) 888-9944

[Service Canada, Kitchener](#)

1 (800) 622-6232

[Land Registry Office, Kitchener](#)

(519) 571-6043

[Service Ontario, Elmira](#)

(519) 699-2040



24 Church Street West

P.O. Box 158

Elmira, Ontario N3B 2Z6

Contact Township Office at 519-669-1647

or 1-877-969-0094

[CLICK HERE](#) to contact
specific departments/staff